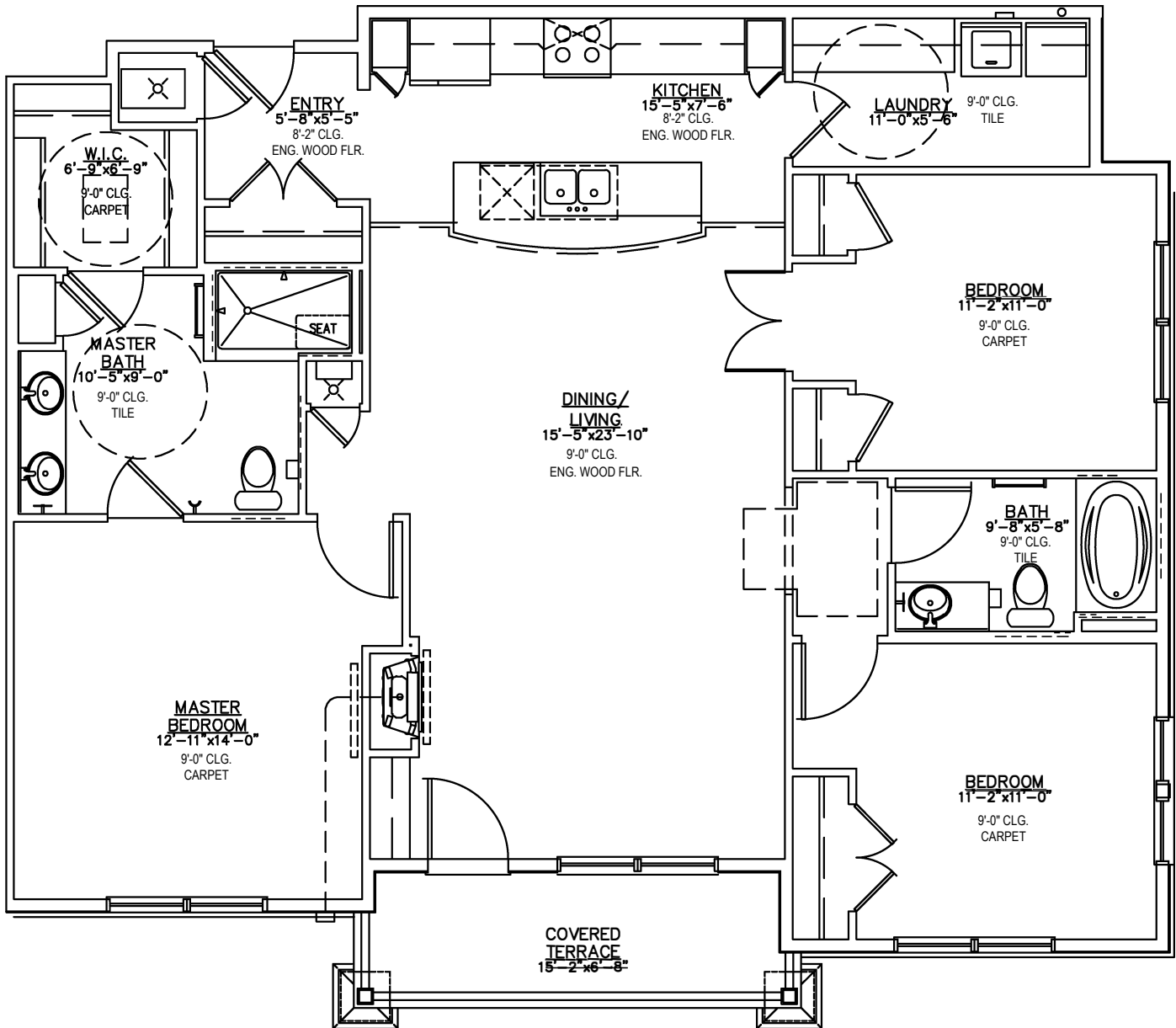


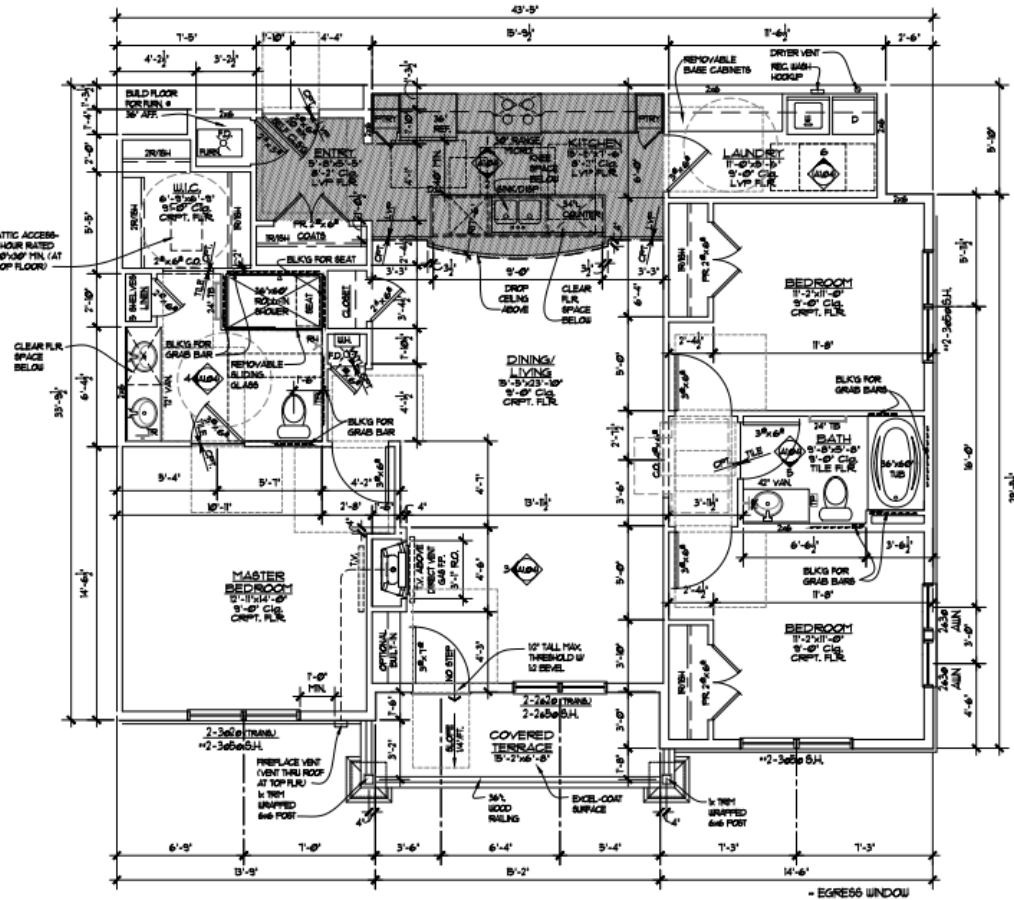
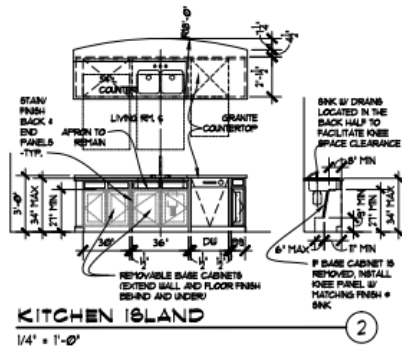
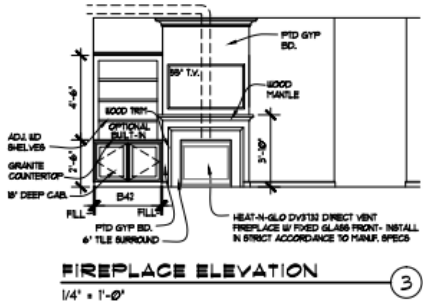
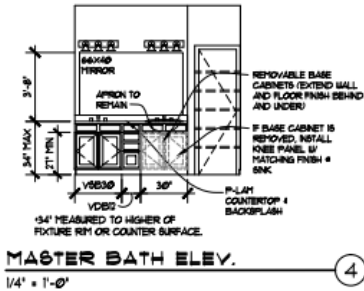
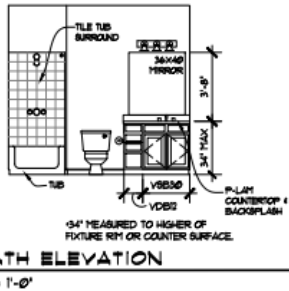
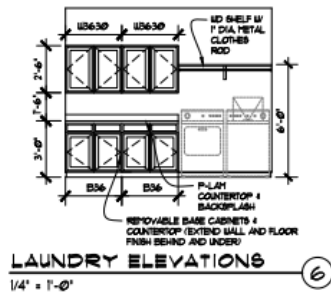
6556 Crystal Downs Drive Unit #201



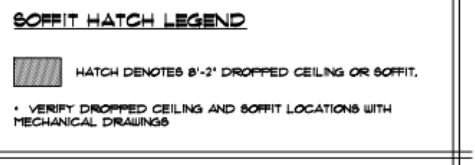
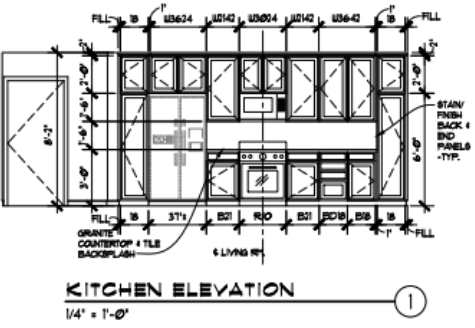
Cambridge

3 Bedroom, 2 Bathroom

1,383 Square Feet



"TYPE A" ACCESSIBLE UNIT



- UNIT PLAN GENERAL NOTES**
- GENERAL CONTRACTOR IS TO VERIFY ALL DOOR SIZES PRIOR TO ORDERING.
 - WINDOW SIZES ARE SHOWN ON PLANS IN ACCORDANCE WITH ARCHITECTURAL MANUFACTURER'S ASSOCIATION STANDARDS UNLESS OTHERWISE NOTED.
 - VERIFY LOCATION OF FURRED AREAS FOR AIR CONDITIONING PER MECHANICAL PLANS.
 - PROVIDE EACH ENTRY DOOR WITH PEEP HOLE WITH A 180 DEGREE VIEWER AND A DEADBOLT LOCK.
 - WEATHERSTRIP ALL EXTERIOR DOORS.
 - EVERY PRIMARY ENTRANCE TO UNITS SHALL HAVE A DOOR KNOCKER
 - PROVIDE SAFETY GLAZING AT HAZARDOUS LOCATIONS PER IBC SECTION 2406.
 - PROVIDE APPROVED SMOKE DETECTORS WIRED INTO THE BUILDING'S PRIMARY POWER SYSTEM PER IBC SECTION 907.10. SEE MECHANICAL PLANS FOR LOCATIONS.
 - PARTY WALLS AND FLOOR/CEILING ASSEMBLIES SEPARATING DUELLING UNITS SHALL MEET OR EXCEED 50 S.T.C. TEST PER IBC SECTION 1201.
 - AT TUB AND SHOWER ON FIRE RATED ASSEMBLY, EXTEND GYPSUM BOARD BEHIND AND PROVIDE INSULATION.
 - REFER TO EXTERIOR ELEVATIONS FOR ADDITIONAL WINDOW TRANSOM INFORMATION.
 - ANGLED WALLS ARE AT 45° UNLESS NOTED OTHERWISE.
 - PROVIDE SOLID BLOCKING FOR T.V.S SHOWN = 48"-60" AFF.